

Engaging Diverse Patients and Caregivers as Partners to Identify Disease Management Related Challenges in Atrial Fibrillation: A Qualitative Study Utilizing Human-Centered Design Methodology

Nino Isakadze^{1,2}, MD, Nancy Molello³, David Spragg, MD¹, Yumin Gao, MHS¹, Erin Spaulding³, Ph.D., Zane MacFarlane¹, Erin Michos, MD¹, Joseph Marine, MD¹, Ronald Berger, MD¹, Hugh Calkins, MD¹, Seth S. Martin, MD, MHS^{1,2}.

Johns Hopkins University, Division of Cardiology
 Johns Hopkins University, Center for Health Equity
 Johns Hopkins University, Ciccarone Center
 Johns Hopkins School of Nursing



mTECH

RESULTS

Participant Characteristics



STEP 1. GENERATING EMPATHY – VIRTUAL MEETING WITH PATIENTS AND CAREGIVERS

BACKGROUND

Atrial fibrillation (AFib) is the most common cardiac arrhythmia. AFib is major risk factor for stroke, heart attack and heart failure.



Patients with **AFib** experience poor quality of life and adverse outcomes

Engaging diverse group of patients and caregivers to understand challenges and facilitators of AF management can guide development of innovative solutions.

Emerging Themes

- Inadequate education on AFib
- Lack of guidance on AFib risk factor modification and medication adherence
- Absence of platforms to guide patients when experiencing recurrent AFib episodes

STEP 2. VIRTUAL BRAINSTORMING TO IDENTIFY SOLUTIONS USING "HOW MIGHT WE" QUESTIONS

- HMW use the AFib app to guide me in making lifestyle changes?
- HMW use the AFib app to better guide me when I have symptoms of AFib?
- HMW use the AFib app to help me better understand different options of care when living with Afib?

METHODS

Virtual Meetings



8 Patients with Diagnosis of AFib & their caregivers

Statistical Analysis

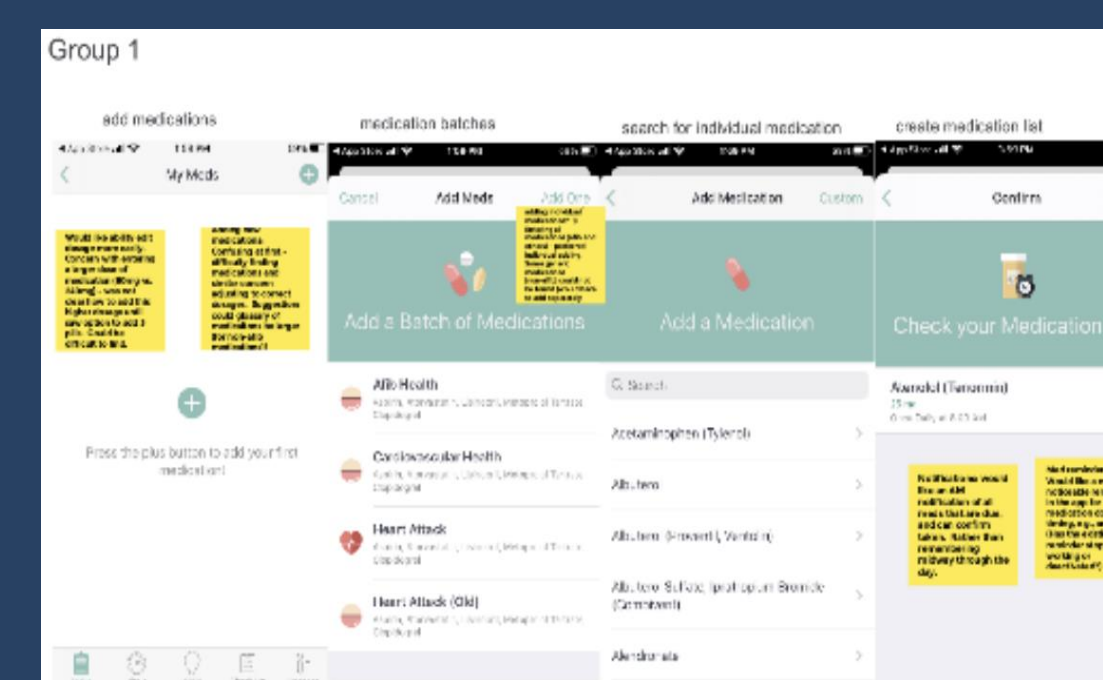
Line by line coding via Atlas.ti & Affinity Diagraming

Grouping of the codes & identification of emerging themes

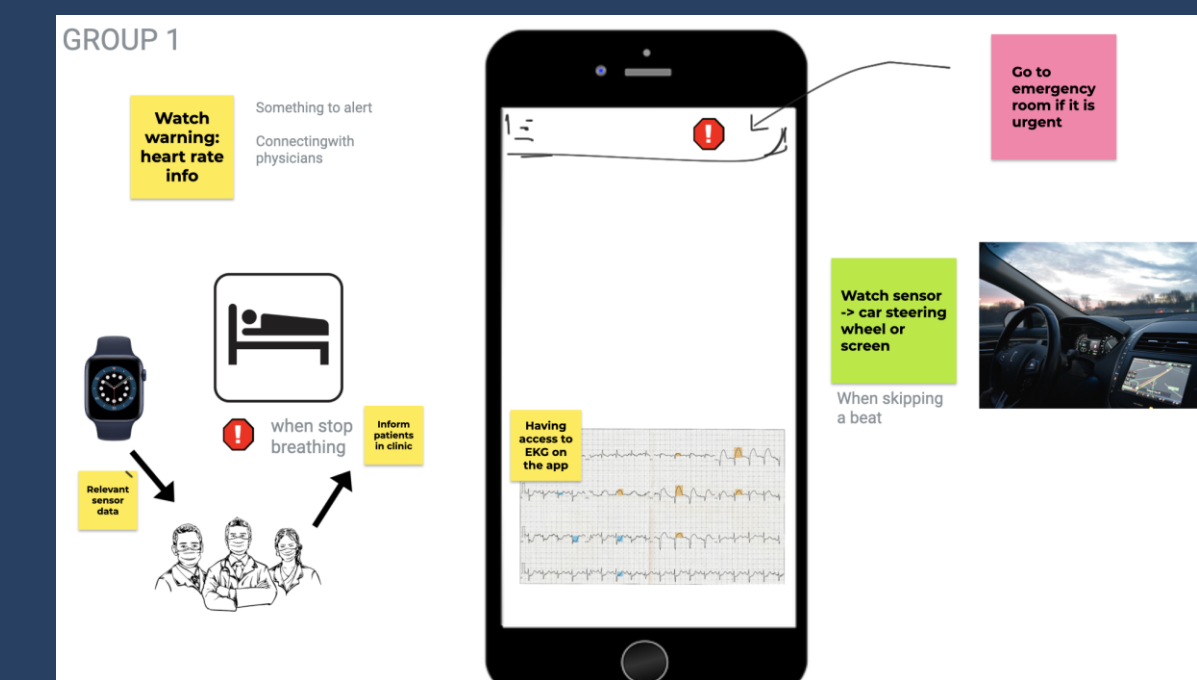
STEP 3. VIRTUAL PROTOTYPES OF SOLUTIONS (DESIGNED BY PATIENTS)



Afib Education and Risk Factor Modification Prototype



Afib Medication Adherence Prototype



Afib Episode Management Prototype

STEP 4. ENGINEERING WORK (ONGOING)

DISCLOSURES

The primary authors (R.S., P.P.H.) have nothing to disclose. The lead author (S.S.M.) is a founder of and holds equity in Corrie Health. This arrangement has been reviewed and approved by the Johns Hopkins University in accordance with its conflict of interest policies. Outside of the present work, S.S.M. has received material support from Apple and iHealth and funding from the Maryland Innovation Initiative, Wallace H. Coulter Translational Research Partnership, Louis B. Thalheimer Fund, the Johns Hopkins Individualized Health Initiative, and American Heart Association. S.S.M. also reports additional research support from the Aetna Foundation, the American Heart Association, the David and June Trone Family Foundation, Google, the National Institutes of Health, Nokia, and the PJ Schafer Memorial Fund. S.S.M. reports personal fees for serving on scientific advisory boards for Akcea Therapeutics, Amgen, Esperion, Novo Nordisk, Quest Diagnostics, Regeneron, and Sanofi. S.S.M. is a coinventor on a pending patent filed by The Johns Hopkins University for a system of low-density lipoprotein cholesterol estimation.

